

### FROM INVERNESS:

From the Centre of Inverness, follow the signs for the A9, stay on the A9 north, cross the Kessock bridge, travel on till the Tore roundabout where you take the 3rd exit towards Wick. Carry on until you see a sign for Culbokie, turn right here, after a short distance turn right towards Knockbain/Munloch. On this road travel 1.1 mile till your reach the sign for Abalone/Culbokie Airfield, drive up this private road to Abalone and Culbokie Airfield.



Within the grounds of Abalone lies Culbokie Airfield, a 500 metre main runway (grass runs NNE-SSW) with secondary strip of 190m x 12m (grass runs E-W). The GPS navigational code is 57 35.13N - 004 19.07W. Please refer to our website for detailed maps. PPR for briefing essential.

The airfield has been designed for Microlight aircraft. Microlights are most welcome provided they have the necessary third party insurance cover. Pilots can fly on to Dornoch in the north, Inch in the east and Plocton in the west, to mention but a few.

Abalone is indeed an ideal place from which to fly to all corners of the Highlands and return to a warm welcome and home cooked food.



Abalone and Culbokie Airfield at Croft Feach is a large modern property in a rural area on the beautiful Black Isle near Dingwall. Set in its own grounds of 48 acres, it enjoys spectacular uninterrupted views south towards Strathconnon, west across the Cromarty Firth to Ben Wyvis and north towards the Fyrish Monument.







# Abalone

Duncanston, By Culbokie, Dingwall, Ross-Shire, IV7 8JD Inverness, Scotland.

Tel: 01349 877806 Fax: 07780 991 403

Email: [enquiries@abalonebandb.com](mailto:enquiries@abalonebandb.com)

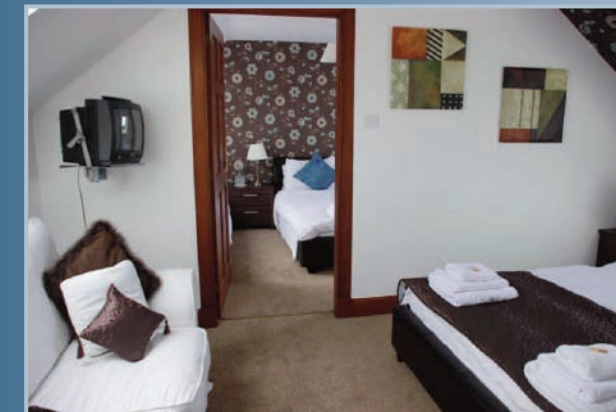
Web: [abalonebandb.com](http://abalonebandb.com)

Abalone is a very beautiful family home, which is bright, spacious, quiet and welcoming. Our guests have the opportunity to enjoy our very large lounge where there is a wood burning stove and a large T.V. If however you enjoy a leisurely game of chess or play cards, all are provided. If none of these appeal to you, just sit back and enjoy the wonderful view from the comfort of our lounge and Dining Room.

Abalone is ideal for those wishing to spend some quality time in a peaceful location, or it is equally good for those wishing to visit Inverness for shopping, Aviemore for skiing or walking in the mountains.

We are situated in an ideal location from where our visitors can visit North, South, East and the West Highlands. Attractions such as Aviemore Ski Centre, Culloden Battlefield, Inverness for shopping Loch Ness, Black Isle Brewery, Glenmorangie Whiskey Distillery, Tomatin Distillery, Black Isle Agricultural Show held in August, the Black Isle Wildlife Park, Horse Riding at Kessock and Fortrose, Quad Biking, Paint Ball Centre, Cromarty Court House, Cycling Tracks to Fortrose and on to Cromarty and around the Black Isle, Forest walks in and around Culbokie, Fyrish Hill and Easter Ross. These are but a few of the many attractions which can be accessed from Abalone. There is also Golfing and Fishing nearby.

There are many species of wildlife... Red Kites and Buzzard, Osprey, Red Foxes, Deer, Pheasant, Red Squirrel, Scottish Wildcat and Pine Martens. On the Cromarty Firth and Moray Firth Bottlenosed Dolphin and the Common Seal can be seen. At Chanonry Point you will often be able to see Bottlenosed Dolphin up close. Munlochy Bay is ideal for Bird Watching.



Our Guest Room's are spacious and comfortable, they are fitted with remote-control T.V., DVD player, hair dryer, en-suite/private facilities, electronically adjustable beds with memory foam mattresses, 100% Egyptian Cotton Sheets, seating and coffee making facilities with Wi Fi throughout the house.

For the Children we have a large outdoor play area where there is a trampoline, Basketball court, large wooden Climbing Frame and a Football Net.

Pets Welcome

All of these make Abalone the ideal holiday accommodation for our guests.

